

Catalogue

Rubber flooring



Rubber United
YOUR SUPPLIER OF RUBBER PRODUCTS

Table of contents

Flooring

• Small ribbed	3
• Small ribbed VDE	3
• Medium ribbed	4
• Broad ribbed	5
• Industrial tears	5
• Checker	6
• Diamond	6
• Supergrip	7
• Rice	7

Heavy Duty flooring

• Hammer blow	8
• Rough cloth impression	8

Stud flooring

• N11	9
-------	---

Granulated rubber flooring

• Recyfloor standard	10
----------------------	----

Sports flooring

• Ultrafloor	11
--------------	----

Small ribbed



quality : SBR/NR
 hardness : 70° Shore A ± 5°
 working temperature : -10°C / +70°C
 execution : small ribbed top, reverse cloth impression

Application:

Anti-Slip protection, commercial vehicles, construction sites, entryways, indoor/outdoor aisle ways, industrial shelves, scraper mats, shelf liners, toolbox liners, van flooring.

article code	thickness (mm)	width (mm)	length (mm)	colour	execution
30100500	3	500	10000	black	standard
30100100	3	1000	10000	black	standard
30100120	3	1200	10000	black	standard
30100130	3	1200	20000	black	standard
30100140	3	1400	10000	black	standard
30100180	3	1800	10000	black	standard
30100200	3	2000	10000	black	standard
30102120	3	1200	10000	black	oil resistant
30101224	3	1200	10000	black	with insertion
30101100	3	1000	10000	grey	standard
30101120	3	1200	10000	grey	standard
30101140	3	1400	10000	grey	standard
30101180	3	1200	10000	green	standard

Small ribbed VDE

According to VDE030 / EM60243 - 1:10919 / IEC61111



quality : SBR/NR
 hardness : 65° Shore A ± 5°
 working temperature : -20°C / +70°C
 execution : small ribbed top, reverse cloth impression

Application:

Anti-Slip protection, commercial vehicles, construction sites, entryways, indoor/outdoor aisle ways, industrial shelves, scraper mats, shelf liners, toolbox liners, van flooring.

article code	thickness (mm)	width (mm)	length (mm)	colour	withstand voltage
30104970	3	1000	10000	grey	30.000 Volt
30104980	3	1200	10000	grey	30.000 Volt
30104990	4,5	1000	10000	grey	50.000 Volt
30105000	4,5	1200	10000	grey	50.000 Volt

Medium ribbed



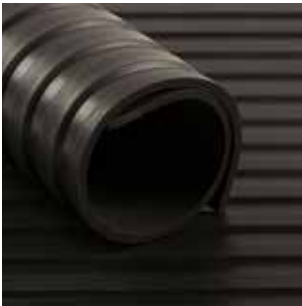
quality : SBR/NR
 hardness : 65° Shore A ± 5°
 working temperature : -30°C / +60°C
 execution : medium ribbed top, reverse cloth impression

Application

Anti-Slip protection, commercial vehicles, construction sites, entryways, indoor/outdoor aisle ways, industrial shelves, scraper mats, shelf liners, toolbox liners, van flooring.

article code	thickness (mm)	width (mm)	length (mm)	colour
30111001	3	1200	10000	black
30111002	3	1200	10000	grey
30111005	4	1600	10000	black

Broad ribbed



quality : SBR/NR
 hardness : 65° Shore A ± 5°
 working temperature : -30°C / +60°C
 execution : broadribbed top, reverse cloth impression

Application

Anti-Slip protection, commercial vehicles, construction sites, entryways, indoor/outdoor aisle ways, industrial shelves, scraper mats, shelf liners, toolbox liners, van flooring.

article code	thickness (mm)	width (mm)	length (mm)	colour
30120100	5	1000	10000	black
30120120	5	1200	10000	black
30120101	6	1000	10000	black
30120121	6	1200	10000	black
30120122	8	1200	10000	black
30120140	6	1400	10000	black

Industrial tears



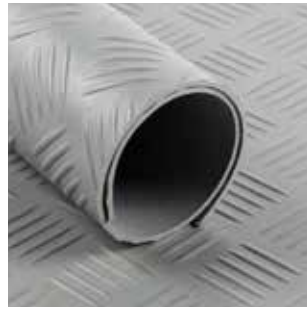
quality : SBR/NR
 hardness : 70° Shore A ± 5°
 working temperature : -10°C / +70°C
 execution : upper side diamond profile, reverse cloth impression

Application

Anti-Slip protection, commercial vehicles, construction sites, entryways, indoor/outdoor aisle ways, industrial shelves, scraper mats, shelf liners, toolbox liners, van flooring.

article code	thickness (mm)	width (mm)	length (mm)	colour
30140100	3	1000	10000	black
30140150	3	1500	10000	black
30140152	3	1500	10000	grey
30140151	5	1200	10000	black

Checker



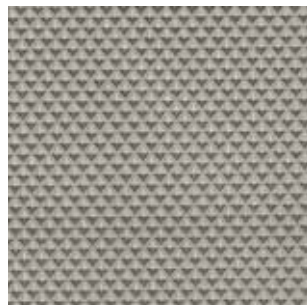
quality : SBR/NR
 hardness : 70° Shore A ± 5°
 working temperature : -15°C / +70°C
 execution : upper side checker profile, reverse cloth impression

Application

Anti-Slip protection, commercial vehicles, construction sites, entryways, indoor/outdoor aisle ways, industrial shelves, scraper mats, shelf liners, toolbox liners, van flooring.

article code	thickness (mm)	width (mm)	length (mm)	colour	execution
30150142	3	1400	10000	black	standard
30150148	3	1600	10000	black	standard
30150160	3	1400	10000	grey	standard
30150144	5	1400	10000	black	standard

Diamond



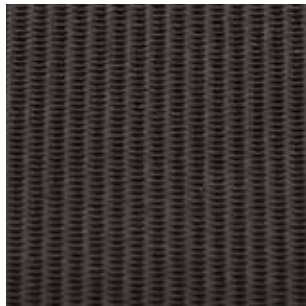
quality : SBR/NR
 hardness : 70° Shore A ± 5°
 working temperature : -10°C / +70°C
 execution : upper side diamond profile, reverse cloth impression

Application

Anti-Slip protection, commercial vehicles, construction sites, entryways, indoor/outdoor aisle ways, industrial shelves, scraper mats, shelf liners, toolbox liners, van flooring.

article code	thickness (mm)	width (mm)	length (mm)	colour
30190201	2,6	1500	10000	black
30190206	2,6	1500	10000	grey

Supergrip



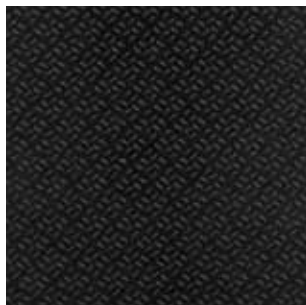
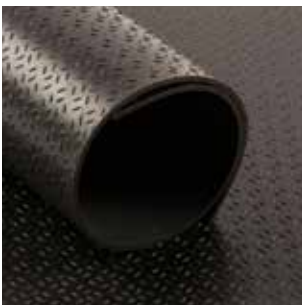
quality : SBR/NR
 hardness : 70° Shore A ± 5°
 working temperature : -10°C / +70°C
 execution : both sides cloth impression

Application

Anti-Slip protection, commercial vehicles, construction sites, entryways, indoor/outdoor aisle ways, industrial shelves, scraper mats, shelf liners, toolbox liners, van flooring.

article code	thickness (mm)	width (mm)	length (mm)	colour
30280110	3	1600	10000	black
30280120	3	1800	10000	black

Rice



quality : SBR/NR
 hardness : 70° Shore A ± 5°
 working temperature : -15°C / +70°C
 execution : upper side rice grain profile,
 reverse cloth impression

Application

Anti-Slip protection, commercial vehicles, construction sites, entryways, indoor/outdoor aisle ways, industrial shelves, scraper mats, shelf liners, toolbox liners, van flooring.

article code	thickness (mm)	width (mm)	length (mm)	colour	execution
30190300	3	1400	10000	black	standard
30190500	3	1600	10000	black	standard

Hammer blow



quality : SBR/NR
 hardness : 70° Shore A ± 5°
 working temperature : -15°C / +70°C
 execution : upper side turtle profile , reverse cloth impression

Application

Horse, livestock, stable and trailer flooring.

article code	thickness (mm)	width (mm)	length (mm)	colour
30263165	6	1650	10000	black
30264165	8	1650	10000	black
30264180	8	1800	10000	black
30264200	8	2000	10000	black
30275100	10	1800	10000	black
30275201	10	2000	10000	black

Rough cloth impression



quality : SBR/NR
 hardness : 70° Shore A ± 5°
 working temperature : -10°C / +70°C
 execution : both sides rough cloth impression

Application

Horse, livestock, stable and trailer flooring.

article code	thickness (mm)	width (mm)	length (mm)	colour
30280180	8	1800	10000	black
30280200	8	2000	10000	black

N11



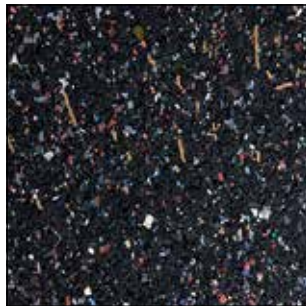
quality : SBR/NR
 hardness : 70° Shore A ± 5°
 working temperature : -20°C / +70°C
 execution : upper side studded profile, reverse cloth impression

Application

Anti-Slip protection, commercial vehicles, construction sites, entryways, indoor/outdoor aisle ways, industrial shelves, scraper mats, shelf liners, toolbox liners, van flooring.

article code	thickness (mm)	width (mm)	length (mm)	colour	stud (ø mm)	stud height (mm)
30160100	3	1000	10000	black	22	1
30160101	3	1200	10000	black	22	1
30160102	3	1500	10000	black	22	1
30160108	3	1600	10000	black	22	1
30160103	3	1000	10000	grey	22	1
30160104	3	1200	10000	grey	22	1
30160120	4	1000	10000	black	22	1
30160121	4	1200	10000	black	22	1

Recyfloor standard



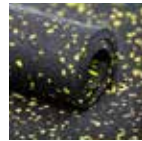
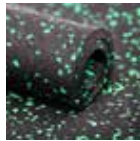
quality : PU bonded Recycled rubber
 hardness : 35° Shore A ± 5°
 working temperature : -30°C / +80°C
 execution : black granulate with colored speckles

Application

Made from recycled rubber. Universal product for sound insulation and vibration absorption. Can be used as underlay under parquet, laminate, carpeting and ceramic tiles as well as under linoleum and PVC flooring. It can also be used for vibration absorption of machines, elevator motors, pumps, ventilation systems.

article code	thickness (mm)	width (mm)	length (mm)
33031500	3	1500	20000
33041500	4	1500	20000
33051500	5	1500	20000
33061500	6	1500	20000
33081500	8	1500	10000
33101500	10	1500	10000
33151500	15	1500	10000
33201500	20	1500	5000

Ultrafloor



quality	: recycled rubber with PU bonding agent
hardness	: 60° Shore A ± 5°
working temperature	: -30°C / +80°C
execution	: black granules with coloured speckles

Application

Ultrafloor is the recommended choice for high-traffic active spaces. Sportfloor features a dense rubber core that provides excellent, high-impact durability and superior slip resistance in wet or dry conditions. Sportfloor also combines anti-fatigue and ergonomic comfort properties with very low maintenance. Containing a 60 to 85% recycled content range and low VOC emissions, Sportfloor is widely regarded as the premiere “green” resilient flooring choice for fitness centres.

article code	thickness (mm)	width (mm)	length (mm)	colour	weight (kg/m ²)
33801228	6	1500	20000	black/grey	6
33801232	8	1500	15000	black/grey	8
33801226	6	1500	20000	black/blue	6
33801227	8	1500	15000	black/blue	8
33801224	6	1500	20000	black/green	6
33801230	8	1500	15000	black/green	8
33801236	6	1500	20000	black/red	6
33801237	8	1500	15000	black/red	8
33801238	6	1500	20000	black/yellow	6



Rubber United
YOUR SUPPLIER OF RUBBER PRODUCTS

Rubber United (Pty) Ltd | South Africa
info@rubberunited.co.za | www.rubberunited.co.za